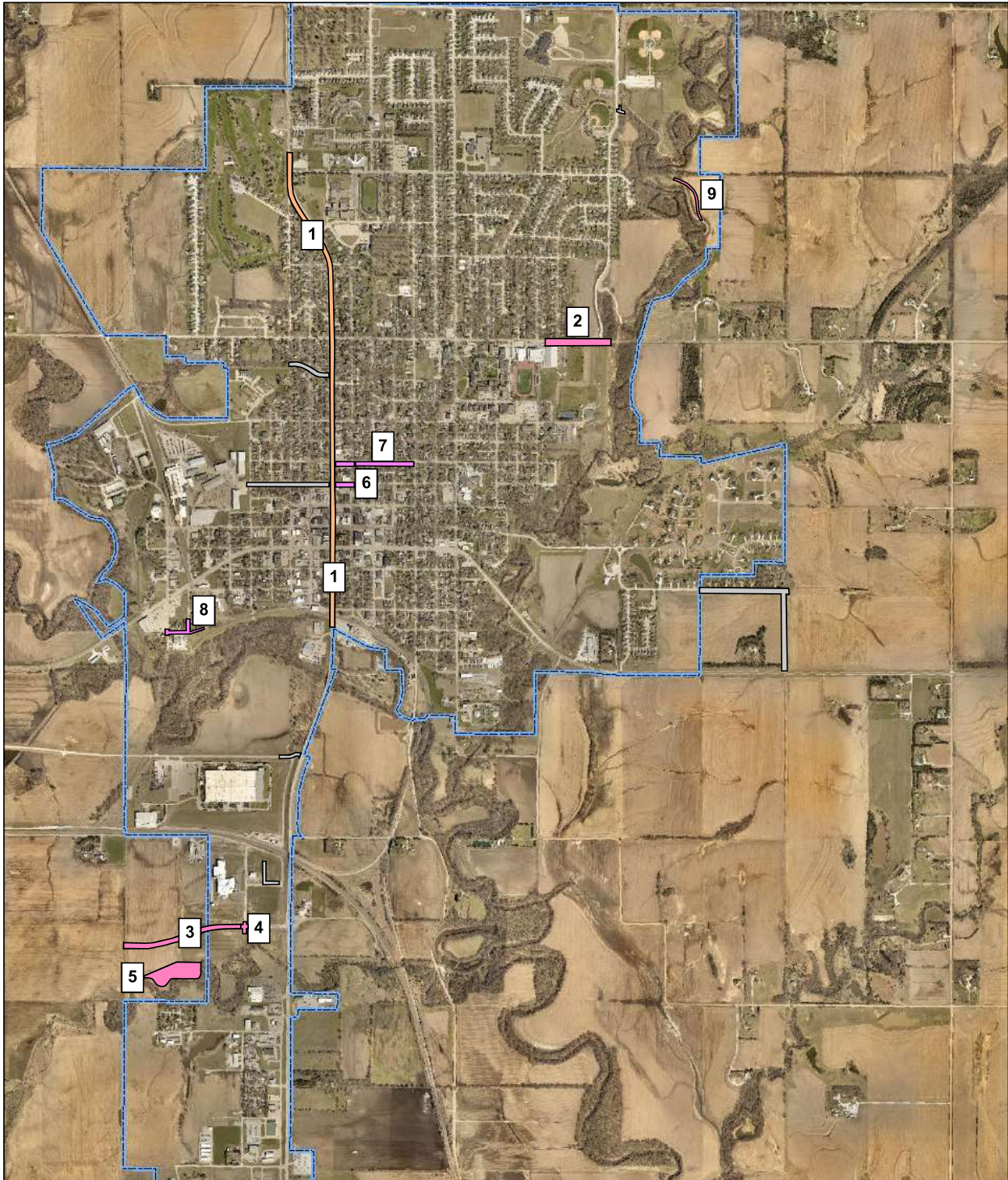


FY 2025 One and Six Year Road Plan (FY 2025 - FY 2031)

Priority	Project #	Project Type	Status	Completed Project Description (FY 2024)	Surfacing	Projected Engineering Cost	Actual Construction Cost	Estimated Const Year (FY)	Funding	Comment
N/A	M-539 (209)	New Paving	Construction	East Seward Street - City Limit to Prairie Flower Rd (E-W) Prairie Flower Rd to STH 34 (N-S)	Concrete with Curb		\$1,620,000	2023/ 2024	County contribution \$250,000	Completion anticipated December 2023 Construction straddles two fiscal years
N/A	M-539 (210)	Reconstruction Storm Sewer	Construction	Park Avenue from 6th to 8th Streets 36-inch SS	Concrete paving Pipe		\$1,654,000	2023/ 2024		Completion anticipated December 2023 Construction straddles two fiscal years
N/A	M-539 (219)	Reconstruction Storm Sewer	Construction	Bradford St, 6th to 10th 18-inch SS	Concrete paving Pipe		\$628,000	2023/ 2024		Completion anticipated December 2023 Construction straddles two fiscal years
N/A	M-539 (233)	Street Reconstruction	Engineering & Construction	Izaak Walton at Hwy 15	Concrete with Curb		\$851,000	2024		Completion anticipated December 2023 Construct prior to Hwy 15/6th St widening
Priority	Project #	Project Type	Status	One Year Plan Description (FY 2025)	Surfacing	Projected Engineering Cost	Projected Construction Cost	Estimated Const Year (FY)	Funding	Comment
1	M-539 (213)	Reconstruction Storm Sewer	Construction	Highway 15 (6th St) Ash St to City Limits	Concrete with Curb	\$0	\$9,900,000	2024/ 2025	Federal & State funding City contribution est. \$80,000	NDOT Project, City contribution for parallel parking stalls along Courthouse square
2	M-539 (151)	Reconstruction Storm Sewer	Construction	East Hillcrest Drive from Eastridge Drive to Plum Creek bridge (includes Bike Trail spur)	Concrete with Curb	\$148,000	\$1,152,000	2025		Engineering in 2022-2023-2024 Bid Fall 2024
3	M-539 (222)	New Paving	Engineering & Construction	Worthman Blvd from Pine St to west limit of Rail Campus Development	Concrete with Curb	\$148,000	\$2,700,000	2025	Conditional \$538,000 EOP Grant	Engineering in FY 2024 Bid Fall 2024, Construct 2025
4	M-539 (235)	Storm Sewer Reconstruction	Engineering & Construction	Pine Street and Worthman Blvd Intersection	Storm Sewer Concrete pavement	Combined with above	Combined with above	2025		Combined with Priority 3, Project M-539 (222) Widen intersection radii to match truck traffic
5	M-539 (236)	Storm Sewer Detention	Engineering & Construction	Rail Campus Detention Basin	Detention Basin	\$400,000	\$400,000	2025		Engineering in FY 2024 Bid Fall 2024, Construct 2025
6	M-539 (228)	Storm Sewer Reconstruction	Engineering & Construction	Bradford St, 5th to 6th Roberts Street, 5th to 6th	Storm Sewer Concrete pavement	\$253,000	\$253,000	2025		Engineering 2023 2024, Bid Fall 2024 Completes Hwy 15 drainage
7	M-539 (218b)	Overlay	Planning	Roberts Street, 3rd Street to 5th Street	Asphalt with Concrete Curb		\$600,000	2028		
8	M-539 (238)	Storm Sewer Reconstruction	Engineering & Construction	River Street 14th Street to 13th Street	Storm Sewer Concrete pavement	\$160,000	\$500,000	2025		In conjunction with 48-unit apartment building at 1313 W Highway 34
9	M-539 (226)	Bike Trail/ Shared Use Path	Engineering & Construction	Plum Creek Trail re-route	Concrete	\$0	\$30,000	2025		Constructed by city staff
Priority	Project #	Project Type	Status	Six Year Plan Description (FY 2026-2031)	Surfacing	Projected Engineering Cost	Projected Construction Cost	Estimated Const Year (FY)	Funding	Comment
1	M-539 (217)	Bridge Reconstruction	Engineering	Plum Creek Bridge at East Hillcrest Drive	Concrete	\$0	\$4,000,000	2026	100% Federal Funding	Managed by NDOT Preliminary Engineering complete 2022
2	M-539 (193)	Storm Sewer Detention	Engineering	Pinewood and Hwy 15 Drainage	Detention Basin	\$120,000	\$400,000	2026		Engineering in 2025 Probable site west of Hwy 15 in Golf Course
3	M-539 (196b)	Reconstruction Storm Sewer	Engineering	Pinewood Avenue - Meadow Lane to Hwy 15	Concrete/Asphalt	\$148,000	\$1,821,000	2026		Engineering in 2025 Different treatments in different sections
4	M-539 (184a)	Street Reconstruction	Engineering	East Hillcrest Drive from Eastridge Drive to Columbia	Concrete with Curb		\$1,500,000	2026		Engineering in 2025 Bid Spring 2025
5	M-539 (227)	Reconstruction Storm Sewer	Engineering	Seward Street - 4th to 5th St	Storm Sewer Brick reconstruction	\$300,000	\$400,000	2026		
6	M-539 (212)	Reconstruction/ New paving	Engineering	Lindell Avenue from Jackson Avenue to East Seward Street & Jackson Avenue from Lindell Avenue to 127' east of Lindell	Concrete with Curb	\$148,000	\$850,000	2026		Engineering in 2025 Bid Spring 2025
7	M-539 (170)	Bike Trail/ Shared Use Path	Engineering	Bike Trail from South Columbia to Waverly Road and Karol Kay (ENH-30(83))	Concrete	\$400,000	\$4,000,000	2026	80/10/10 cost share with State & Federal	City contribution estimated \$400,000 Engineering 2022/2023/2024
8	M-539 (184b)	Street Reconstruction	Planning	Hillcrest Drive from Columbia Avenue to 3rd Street	Concrete with Curb		\$1,500,000	2027		
9	M-539 (223a)	Overlay	Planning	Third Street - Ash Street to Main Street	Asphalt with Concrete Curb	\$148,000	\$700,000	2027		
10	M-539 (194)	Storm Sewer	Planning	42" storm sewer between 12th & 13th north of Main Street	Pipe		\$100,000	2027		Research existing pipe diameters; identify bottleneck
11	M-539 (199)	Reconstruction	Planning	East Seward Street - Lindell Avenue to Columbia Avenue	Brick/concrete		\$500,000	2027		Engineering completed in 2024 In sequence after Jackson/Lindell (Project 212)
12	M-539 (204)	Stormwater	Engineering	Open channel from Elementary School to Rainbow Avenue near Star Street	Concrete Channel		\$60,000	2027		Engineering in-house
13	M-539 (218b)	Overlay	Planning	Roberts Street, Columbia Avenue to 3rd Street	Asphalt with Concrete Curb		\$600,000	2027		
14	M-539 (205)	Storm Sewer Reconstruction	Planning	8th St, from Park Av to Hillcrest W. Hillcrest, 7th St to Ironwood	Brick/concrete Pipe, curb inlets		\$509,000	2027		Engineering in 2024 Different treatments in different sections
15	M-539 (201)	Signal	Planning	Traffic Signal on Hwy 15 at Worthman Blvd (Rail Campus)	N/A		\$400,000	2027		Required when traffic warrants
16	M-539 (234)	New Paving	Planning	Columbia Avenue from City Limit to Depot Street	Concrete with Curb		\$30,000	2027		Constructed by city staff
17	M-539 (184c)	Street Reconstruction	Planning	Hillcrest Drive from 3rd Street to Highway 15 (6th Street)	Concrete with Curb		\$1,500,000	2028		

FY 2025 One and Six Year Road Plan (FY 2025 - FY 2031)

Priority	Project #	Project Type	Status	Six Year Plan (continued)		Projected Engineering Cost	Projected Construction Cost	Estimated Const Year (FY)	Funding	Comment
				Description (FY 2026-2031)	Surfacing					
18	M-539 (131)	New Paving	Planning	Park Avenue from N. 11th St. to N. 12th Street	Concrete with Curb Box culvert		\$385,000	2028		Pavement constructed by city staff Acquire ROW. Requires USACE approval
19	M-539 (223b)	Overlay	Planning	Third Street - Main Street to Bradford	Asphalt with Concrete Curb		\$700,000	2028		Pavement constructed by city staff Acquire ROW. Requires USACE approval
20	M-539 (221)	Storm Sewer	Planning	Plum Creek Park	Detention		\$300,000	2028		Probable site south of tennis courts Coordinate with NRD
21	M-539 (237)	Storm Sewer Reconstruction	Planning	Seventh Street from Ash Street to Main Street	Concrete with Curb		\$500,000	2028		Replace corrugated metal storm pipe under east curb, partial pavement replacement
22	M-539 (215)	New Paving	Planning	Second Street - Oak St to Big Blue Bridge	Concrete with Curb		\$30,000	2028		Constructed by city staff
23	M-539 (229)	New Paving	Planning	Bluff Road, Plum Creek Bridge to 252nd St	Concrete with Curb		\$2,925,000	2029		
24	M-539 (198)	Overlay	Planning	Ash Street - Columbia Avenue to Highway 15	Asphalt with Concrete Curb		\$400,000	2029		
25	M-539 (238)	Reconstruction	Planning	Fairgrounds Road	Concrete no curb		\$300,000	2029		Currently a county road Annexation
26	M-539 (231)	New Paving	Planning	Cemetery Reynolds Addition Detention	Detention		\$300,000	2029		
27	M-539 (165)	New Paving	Planning	Spruce Street from ½ block west of Progressive Road to Pine Street	Concrete with Curb		\$30,000	2029		Constructed by city staff
28	M-539 (230)	New Paving	Planning	252nd Street, Hwy 34 to Bluff Rd	Concrete with Curb		\$2,274,000	2030		
29	M-539 (202)	Reconstruction	Planning	Highway 15 Bridge across Worthman Creek widening and turn lanes	Asphalt		\$1,500,000	2030		Currently a county road Cost share with county
30	M-539 (224)	Storm Sewer	Planning	Elm Street - 2nd to 3rd Streets	Pipe		\$200,000	2030		Required when traffic warrants
31	M-539 (220)	Storm Sewer Detention	Planning	Cedar Street Detention Basin	Improvements		\$85,000	2030		
32	M-539 (200)	Storm Sewer	Planning	Drainage Basin (Northeast) Improvements			\$400,000	2030		
33	M-539 (232)	New Paving and Subgrade	Planning	Prairie Flower Rd, E. Seward to Bluff Rd	Concrete		\$5,062,000	2031		Improve detention upstream of Cedar St. Detention Basin, property acquisition
34	M-539 (216)	Reconstruction	Planning	Highway 15 Bridge across Big Blue River widening	Concrete		\$6,000,000	2031		4,000 ft.
35	M-539 (161)	New Paving	Planning	Pine Street from Birch Street thru Spruce Street	Concrete with Curb		\$85,000	2031	Seek Federal & State funding	Required when traffic warrants
36	M-539 (162)	New Paving	Planning	Pine Street from Spruce Street thru Walnut Street	Concrete with Curb		\$85,000	2031		
37	M-539 (163)	New Paving	Planning	Pine Street from Walnut Street to Cottonwood Street	Concrete with Curb		\$85,000	2031		
38	M-539 (186)	Reconstruction	Planning	Walnut Street from Progressive Road to Pine Street	Concrete		\$70,000	2031		
39	M-539 (195)	Storm Sewer	Planning	Drainage Basin (Southwest) Improvements			\$200,000	2031		
Long Range Plan										
Project #	Project Type	Status	Description (FY 2032+)	Surfacing	Projected Engineering Cost	Projected Construction Cost	Estimated Const Year (FY)	Funding	Comment	
M-539 (x)	New Paving and Subgrade	Planning	252nd St, Bluff Rd to Waverly Rd	Concrete		\$3,054,000	TBD		5,300 ft.	
M-539 (x)	Reconstruction	Planning	Walker Rd. from Pine St to CTH 294	Concrete		TBD	TBD		4,600 ft.	
M-539 (x)	Reconstruction	Planning	Lincoln Avenue from Columbia Av to Highway 15 (6th Street)	Concrete with Curb		TBD	TBD		Include Bike Trail spur	
M-539 (x)	Reconstruction	Planning	Lincoln Avenue from Highway 15 (6th Street) to 10th St	Concrete with Curb		TBD	TBD		Include Bike Trail spur	
M-539 (x)	Storm Sewer	Planning	Langworthy from Columbia to Meadow Lane	Pipe		TBD	TBD			
M-539 (x)	New Paving	Planning	Birch Street from 285th St to CTH 294	Concrete		TBD	TBD		3,500 ft.	
M-539 (x)	Reconstruction	Planning	Moffitt St from Columbia Av to Highway 15 (6th Street)	Brick/concrete		TBD	TBD			
M-539 (x)	Reconstruction	Planning	Moffitt St from Highway 15 (6th Street) to 10th St	Brick/concrete		TBD	TBD			

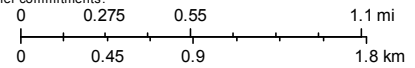


July 15, 2022





DISCLAIMER: This map is not intended for conveyances, nor is it a legal survey. The information is presented on a best-efforts basis, and should not be relied upon for making financial, survey, legal or other commitments.

1:25,432

 Municipal Boundaries

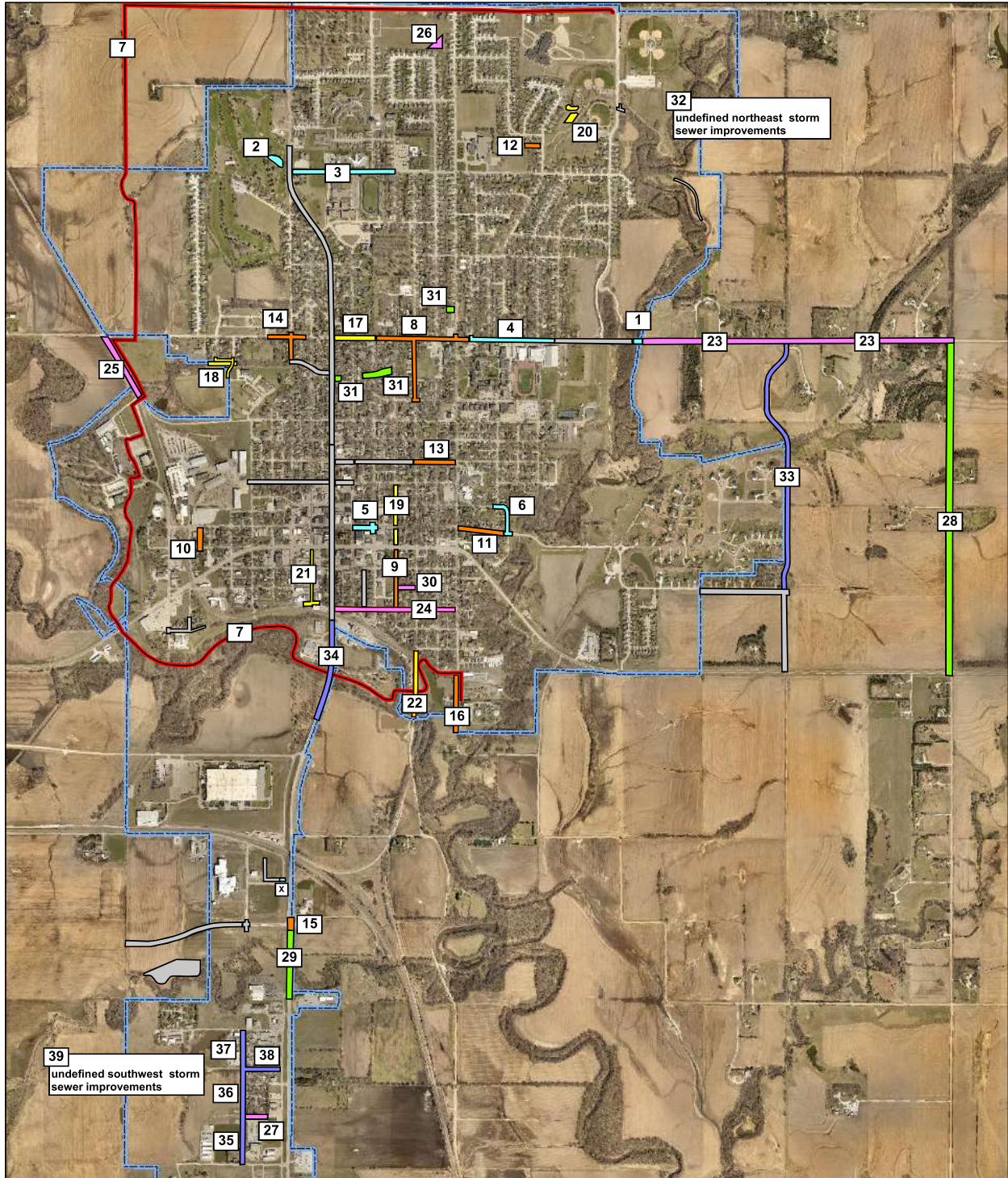


LEGEND

	CITY LIMITS
	Completed
	FY 2024/2025
	FY 2025



NOTE: NUMBERED BOXES  CORRESPOND TO PRIORITY NUMBER IN THE FY 2024 ONE YEAR PLAN

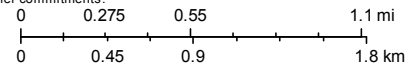


July 15, 2022









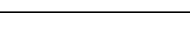
DISCLAIMER: This map is not intended for conveyances, nor is it a legal survey. The information is presented on a best-efforts basis, and should not be relied upon for making financial, survey, legal or other commitments.

1:25,432

 Municipal Boundaries



LEGEND

	CITY LIMITS
	FY 2025
	FY 2026
	FY 2027
	BIKE TRAIL
	FY 2028
	FY 2029
	FY 2030
	FY 2031



NOTE: NUMBERED BOXES  CORRESPOND TO PRIORITY NUMBER IN THE FY 2025 - FY 2030 SIX YEAR PLAN